



## Installation guide for 44-early 55 GM TRUCK

- 1 Remove the ash tray from the dash.
- 2 The charger will be positioned against inside of the front face right at the top

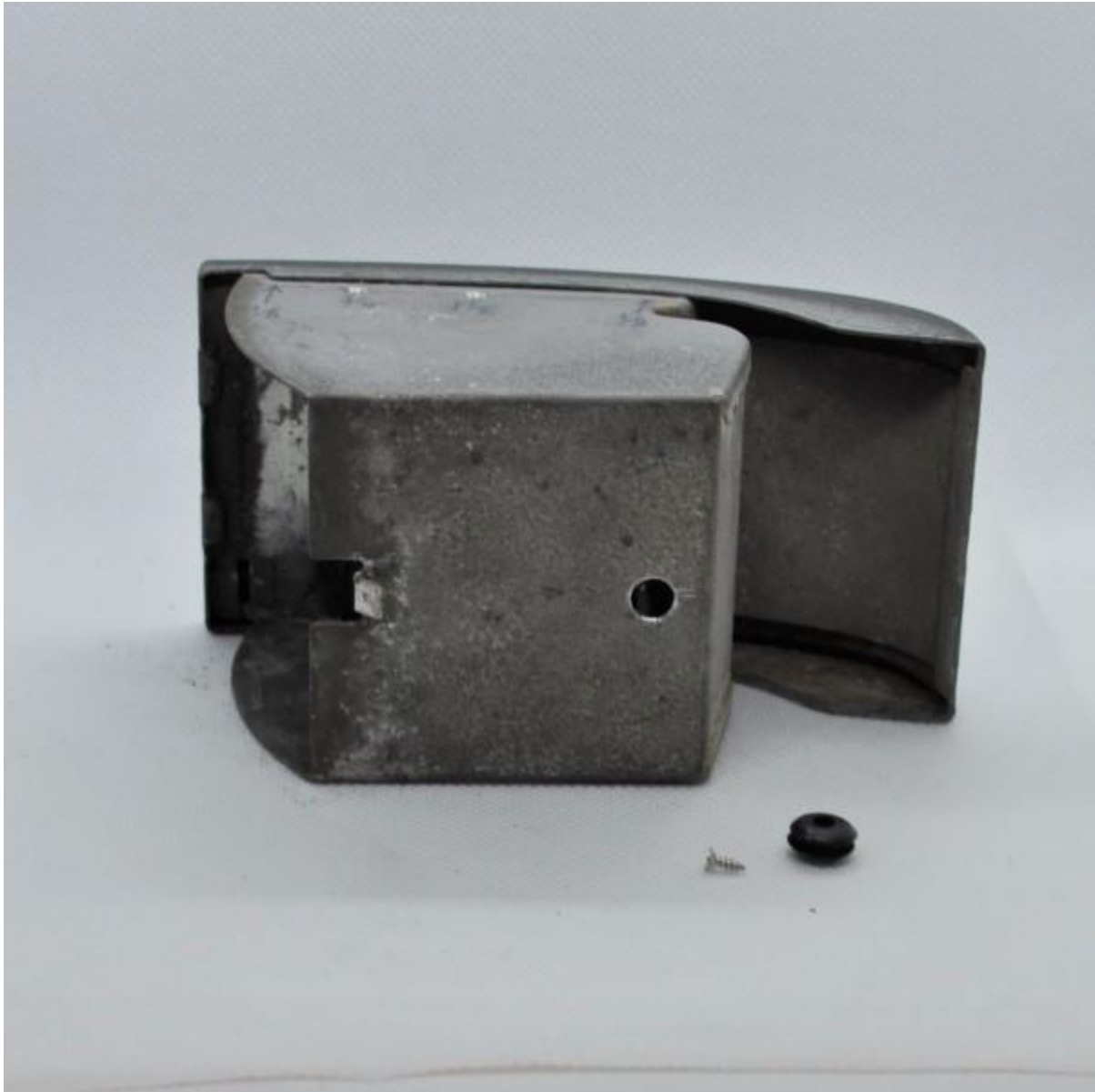


- 3 On the side of the ashtray lay out the two hole positions as shown below by the cross marks. They don't need to be exact as you will be screwing into solid plastic but within  $1/16''$  (2mm) or so. Lay out the two holes  $1/8''$  (3mm) from the edge of the return on the ribbed panel and  $3/8''$  (10mm) and  $1\ 1/8''$  (28mm) from the edge of the overlapping seam of the ashtray. Drill  $3/32''$  (2.5mm) in those two spots and countersink.

Mirror the hole holes for the other side.



- 4 Drill a  $\frac{1}{4}$ " (6mm) hole for the wire exit hole at the bottom of the back of the tray. Check for obstructions under the dash where the wire will exit prior to drilling.

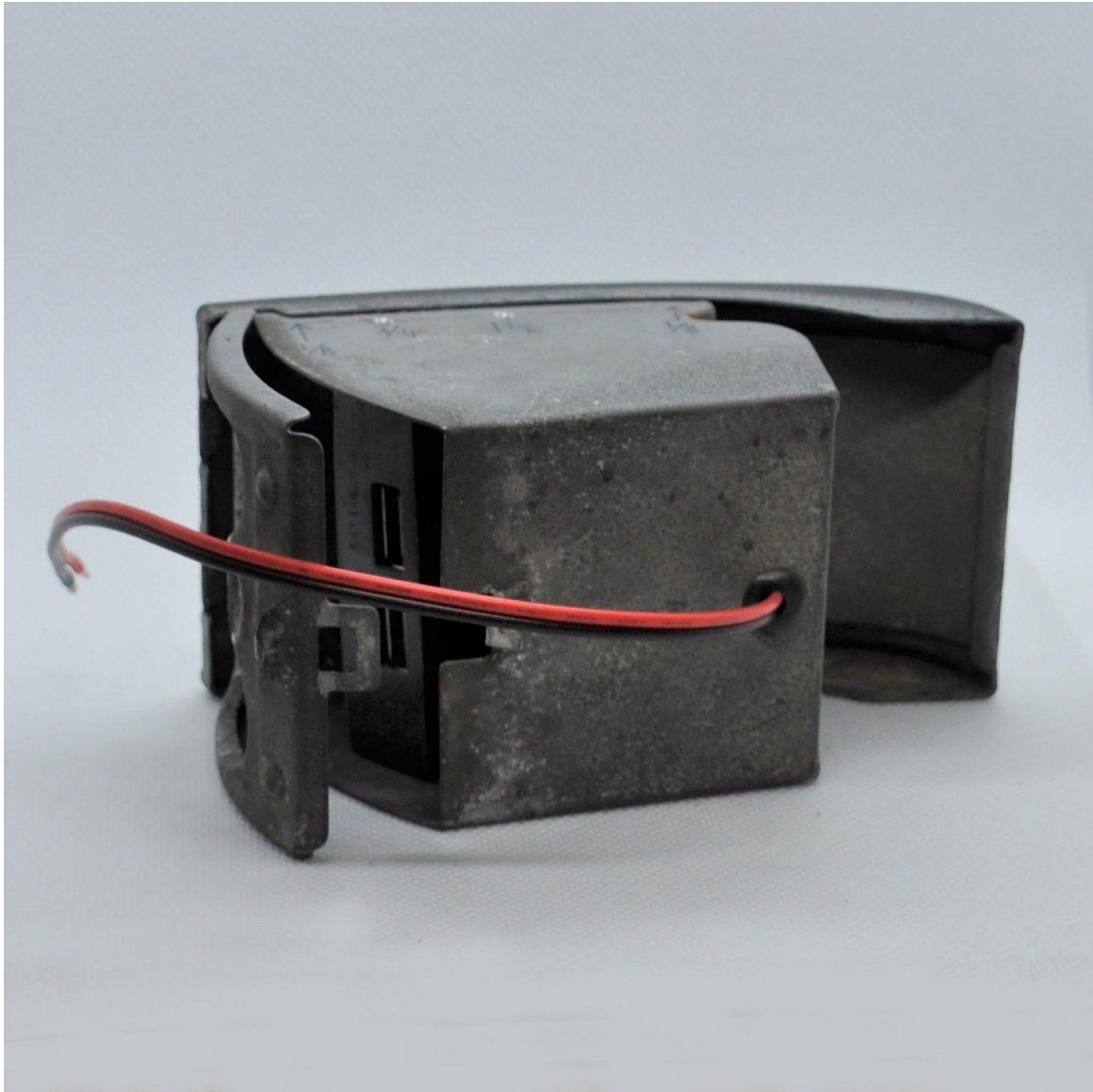


- 5 Remove any sharp edges with a larger drill, countersink or file.

- 6 Bend back the spring tab that secures the top of the ashtray to allow it to open to place the charger inside.



- 7 Thread the wire through the grommet hole before installing the grommet. Hot water will help to soften the grommet if needed. Make sure the charger is in the correct orientation with the usb ports towards the back or the ashtray.



- 8 Re close the top of the ashtray. Hold the charger firmly in its final position, tight to the top and front of the ashtray and screw in the self tapping screws. We do not recommend drilling pilot holes in the charger as it's easy to go too deep and into the circuitry causing damage. You can use a battery screwdriver but go slowly. Ensure the screw heads are flush so they don't catch the dashboard during operation.



- 9 Prepare your power and ground wires behind the dash. Check for smooth operation and then connect the wires. Leave a couple of inches of excess length to allow for the movement of the tray when opening.
  
- 10 Plug in your phone and go for a cruise!